

Table of Contents

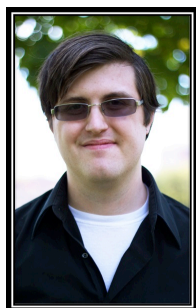
<u>NEW STAFF</u>	2
<u>INSTRUCTION & COURSE DEVELOPMENT</u>	3
<u>REFERENCE</u>	11
<u>COLLECTIONS</u>	12
<u>WEBSITE</u>	16
<u>COMMUNITY ENGAGEMENT & OUTREACH</u>	19
<u>SERVICE</u>	23
<u>SCHOLARLY ACTIVITIES</u>	25
<u>HIGHLIGHTS</u>	29

New Staff

This year, the Medical Library welcomed two new members to our team: Keith Engwall and Evan Sprague.



Keith Engwall, Assistant Professor, Web & Emerging Technologies Librarian, joined the OUWB Medical Library faculty on July 1, 2012. Most recently Keith was the Head of Library Systems and Technology at Catawba College in Salisbury, North Carolina, for 8 years. He received his MS LIS from the University of Illinois in Urbana-Champaign. Keith endeavors to create a dynamic mobile and online presence for the library and leverage new technologies to meet the needs of the medical school and OU community.



Evan Sprague, Medical Library Assistant, joined the OUWB Medical Library on September 11, 2012. He previously worked in Kresge Library's Interlibrary Loan department and has worked in libraries for the last 10 years. Evan has a bachelor's degree in information technology from Oakland University and is currently pursuing a master's degree in library and information science. Evan's primary responsibilities at the OUWB Medical Library are managing the digital materials in the medical library and serving as a frontline for medical reference questions in the evenings and on Saturdays.

Instruction & Course Development

STUDENTS

NEW STUDENT ORIENTATION The Medical Library provided a 40-minute active learning orientation for the school's second class. Students participated in the 'Library Challenge,' a series of scenarios and problems to solve on library spaces, hours, services, and resources. Following the activity, students reconvened for debriefing and clarification. In addition to the challenge, Janet Zimmerman presented a brief overview of the Beaumont Health System Library.

A post-library orientation evaluation revealed that students felt more knowledgeable and comfortable in navigating library resources and the website as well as in approaching library faculty and staff. Overall, 55 of 58 respondents rated library orientation as Good or Excellent. Table 1 displays a content analysis of student comments when asked to list the two most valuable things they learned from the library orientation.

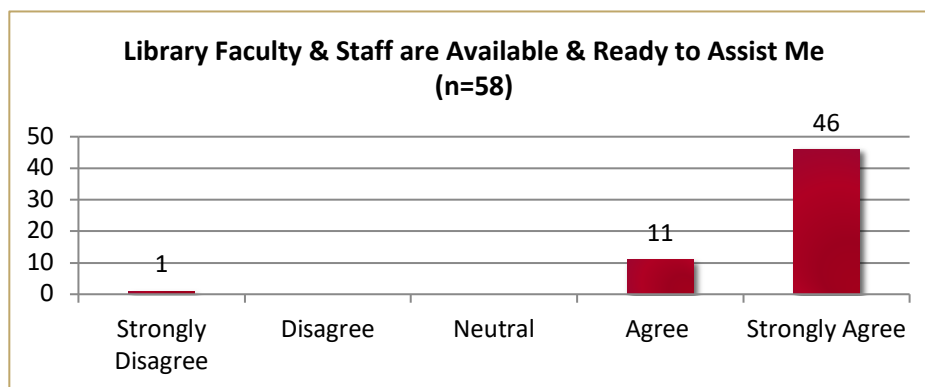


Table 1: What are the two most valuable things you have learned from the library orientation?

Number of Times Cited by Students	Topic
9 - 10	Library Resources
5 - 6	Textbooks
3 - 4	Space, Medical Library Staff
1 - 2	Hours, Printing, Beaumont Medical Library

M1 CAPSTONE COURSE Medical Library faculty continued to play a key role in the ongoing evolution of the M1 Capstone course which is designed to provide the foundational knowledge and skills necessary to conduct scholarly research in a wide range of health-related disciplines including education, service learning, and research training.

Based on last year's positive student evaluations, information mastery content was expanded from five to six sessions to include a second PubMed session at the beginning of the winter semester, accounting for a total of nine instruction hours over the M1 year (see Table 2). The purpose of the instruction was to develop students' ability to identify, access, use, and evaluate information resources efficiently and effectively. The instruction covered content on introduction to evidence-based medicine, literature searching, information management, information resources at the point of care, and copyright.

Course and session objectives, teaching methodologies, learning activities, and assessments for each session were revisited and updated. Each session combined didactic lecture, demonstration, and active learning activities aimed at developing skills in the selection, searching, and basic evaluation of medical information

resources. Faculty also collaborated with Capstone directors in grading student literature reviews, specifically looking at proper source citation and analyzing PubMed searches.

Table 2: Information Mastery Sessions in the M1 Capstone Curriculum

Date	Title	Instructor
August 15, 2012	Introduction to Information Mastery & the Biomedical Literature	Dr. Misa Mi
August 20, 2012	Essentials of Information Resources	Stephanie Swanberg
September 4, 2012	Searching PubMed	Dr. Misa Mi
January 7, 2013	Searching PubMed Part II	Dr. Misa Mi
January 14, 2013	RefWorks, Building a Bibliography & Source Citation	Stephanie Swanberg
January 28, 2013	Copyright & Plagiarism	Nancy Bulgarelli

New this year, the initial Searching PubMed session was structured as a team-based learning (TBL) exercise with students engaged in graded, interactive individual and group exercises. The results from their TBL tests (see Table 3) suggest that the students learned more effectively through collaborative teamwork than individually or didactic lecture.

Table 3: Overview of Individual v. Group TBL Results

	iRAT: Individual Readiness Assurance Test	gRAT: Group Readiness Assurance Test
N	75	75
Mean (%95CI)	6.89 (6.55-7.24)	9.13 (8.98-9.286)
SD	1.48	.66
p	.000	.000

For the second year, a pre- and post-instructional assessment tool developed by Dr. Misa Mi was administered to assess first-year medical students' entry-level knowledge and skills in information literacy and the effect of the instruction of the entire academic year on students' learning outcomes. The questionnaire contained 34 knowledge and skill questions and 8 self-efficiency items. The results from the questionnaires (see Table 4) indicate that the students' mean score on the post-questionnaire ($x=19.41$) was statistically significant higher than that on the pre-questionnaire ($x=11.78$).

Table 4: Pre- and Post-Instruction Self-Assessment Results

	N	Mean (95%CI)	Max	SD	p
Pre-Assessment	72	11.78 (11.02-12.54)	19	3.22	.000
Post-Assessment	75	19.41 (18.60-20.23)	22	3.53	.000

The improvement in students' learning was further supported by the results from the self-efficacy scale items integrated into the questionnaire with 1 = not at all comfortable to 4 = very comfortable (see Table 5).

Table 5: Students' comfort level in using information resources		
	Pre-Assessment	Post-Assessment
DynaMed	0.65	3.03
AccessMedicine	0.79	3.11
UpToDate	0.85	3.16
MD Consult	0.89	3.08
Micromedex	0.67	3.05
PubMed	3.21	3.68
Library Catalog	2.81	3.13

Evidently, the information mastery instruction provided for medical students at OUWB was effective in developing students' knowledge and skills in identifying, accessing and using health information resources efficiently and effectively.

M2 CAPSTONE COURSE In addition to information mastery content taught in the M1 Capstone curriculum, medical library faculty participated in the M2 Capstone course. During the fall semester, each M2 student was required to schedule a 30-minute research consultation with a medical library faculty member to discuss their projects, including strategies for keeping up with the literature and additional resources to search. In total, 49 consultations were completed between October and December 2012, totaling 24.5 hours of library faculty time.

Also in the winter semester of the M2 Capstone course, medical library faculty collaborated on the development and facilitation of two in-person instructional sessions with students divided into four groups based on their project concentration areas and mentored in the scholarly research process (see Table 6).

Table 6: Medical Library Participation in the M2 Capstone Curriculum		
Date	Title	Co-Instructor/Facilitator
February 26, 2013	Developing Scientific Structured Abstracts	Stephanie Swanberg
March 19, 2013	Critiquing Scholarly Posters	Stephanie Swanberg

Although student participation in course evaluations was low, information mastery content received fairly high ratings. Of 13 completed course evaluations, 10 of 12 respondents rated the following two items as average, above average or excellent:

- 1) The integration of information literacy, research, education training and service learning content was clearly linked to scholarly activity
- 2) Hands-on database searching proved an effective teaching method

One student commented: "We are all eager to move forward with our Capstone projects and any session focusing on developing the skills to do so (i.e. PubMed, study design) were helpful."

Dr. Misa Mi and Stephanie Swanberg presented the OUWB Medical Library's integration of information mastery skills in the M1 and M2 OUWB curriculum at the national level at the Medical Library Association Conference as a paper presentation in May 2013.

INTEGRATIVE EVIDENCE BASED MEDICINE COURSE Medical library faculty continued their role as members of the Evidence-Based Medicine course development team. The Evidence-Based Medicine course debuted in winter 2013, running April 2 – 15, 2013, and was the last course of the medical students' second year prior to taking their Step 1 exam. Library faculty were involved in planning the course and taught or co-

taught four sessions accounting for 10 instructional hours (see Table 7). They also participated in constructing the multiple-choice exam and in completing the non-cognitive student assessments. Library faculty taught the following sessions:

Table 7: Information Mastery Sessions in Integrative Evidence-Based Medicine

Date	Title	Instructor
April 2, 2013	Introduction to EBM	Dr. Leslie Rocher, Dr. Misa Mi
April 3, 2013	Searching EBM Resources Part I	Stephanie Swanberg
April 4, 2013	Searching EBM Resources Part II	Dr. Misa Mi
April 11, 2013	Systematic Reviews/Meta-Analysis	Dr. Misa Mi

ADDITIONAL CURRICULUM INTEGRATION

Art & Practice of Medicine Course For the second year, Stephanie Swanberg participated in the flu vaccine educational intervention as part of the Art & Practice of Medicine course in October 2012. This year, M1 students were paired with Oakland University nursing students in this interprofessional education experience. Stephanie specifically introduced students to various authoritative online health information resources to counsel patients to use, including MedlinePlus, NIH Senior Health and LactMed. In total, 106 students were instructed.

Cardiovascular Course Keith Engwall partnered with Dr. Senthil Rajasekaran to investigate the efficacy of hands-on instruction using the mobile drug resource apps of Micromedex and ePocrates for point-of-care information. Pre- and post-survey data was collected about the students' expertise in utilizing these apps and will be presented in a paper.

Gastroenterology & Hepatology Course – GI Motility Podcast/Videocast Project As part of a team, medical students created interactive videos, PowerPoints and handouts on an assigned GI topic and were required to use an appropriate number of sources and cite them correctly. Stephanie Swanberg and Misa Mi reviewed projects and provided formative feedback to students on their use and proper citation of sources.

Neuroscience Course Misa Mi collaborated with Dr. Douglas Gould to develop a graded group assignment for first-year medical students. Individual groups of students were required to write a review on a neuroscience topic of interest and post it on a Wiki constructed as an online repository of student-generated content. The purpose of the assignment was to enhance students' understanding of basic concepts in neuroscience, to help students make clinically important connections in the process of knowledge construction and to reinforce their information literacy skills in identifying and using resources appropriately.

STUDENT LUNCH 'N LEARN SERIES This year the Medical Library debuted a student lunch 'n learn series, a monthly extracurricular instructional series intended to expand on information mastery content taught in the curriculum. Six sessions were taught between September 2012 and March 2013. The series was well received by students, with a total attendance of 82 students over six sessions (see Table 8).

Table 8: Student Lunch 'n Learn Series

Date	Title	Instructor
September 18, 2012	PubMed Refresher	Dr. Misa Mi
October 29, 2012	Keeping Up with the Literature for your Capstone Project	Stephanie Swanberg
November 26, 2012	Databases Other Than PubMed	Keith Engwall
January 14, 2013	USMLE Prep Resources	Keith Engwall, Stephanie Swanberg
February 11, 2013	All Things Google	Misa Mi
March 18, 2013	Mobile Applications for Medicine	Keith Engwall

A post-series evaluation was distributed to participants at the final session and electronically with 28 responses. Students were asked to rate the following statements from 1 = strongly disagree to 5 = strongly agree (see Table 9).

Table 9: Student Rating of Lunch 'n Learns

	1 Strongly Disagree	2 Disagree	3 Neutral	4 Agree	5 Strongly Agree
Instruction provided was organized and effective	--	--	3	21	4
Information presented can be applied to my coursework	--	--	2	17	8
Time and location for the Lunch 'n Learns were convenient for my schedule	--	--	4	12	12
The Medical Library should host another Lunch 'n Learn series next year	--	--	--	12	15
Total			9	62	39

All respondents strongly agreed or agreed that another series should be hosted next year with USMLE Prep Resources and Mobile Applications for Medicine most frequently requested for repeat. In addition, 92% of students either strongly agreed or agreed that the information from the Medical Library Lunch 'n Learns could be applied to their coursework.

FACULTY

NEW FACULTY ORIENTATIONS The Medical Library introduced the School of Medicine’s newest faculty to our resources and services this year and completed a total of 11 new faculty orientations. Faculty toured Medical Library spaces and website, were provided with an overview of the library’s liaison program and resources available in their disciplines and were apprised of the collaboration opportunities for courses and scholarly activities with library faculty.

INFORMATION MASTERY SERIES WITH CONTINUING MEDICAL EDUCATION In our second year of programming, the Information Mastery with CME credit series was formally integrated into the regular program schedule of the new OUWB Center for Excellence in Medical Education. Dr. Misa Mi led the effort in creating the second series of six lectures from January – June 2013, and each session was offered at Beaumont Hospital Royal Oak and Troy (see Table 10). William Beaumont Hospital designated these training activities for AMA PRA Category 1 Credit(s)TM and therefore provided an incentive for both OUWB clinical faculty and physicians to attend the sessions and receive continuing medical education credit.

Table 10: 2012 Continuing Medical Education Series

Month	Title	Instructor
January	Introduction to Evidence-Based Medicine	Dr. Misa Mi
February	EBM Resources	Dr. Misa Mi Janet Zimmerman
March	Searching PubMed	Stephanie Swanberg
April	Tracking Your Scholarly Publications’ Impact on Clinical Research and Practice	Stephanie Swanberg
May	Online Collaboration Tools	Keith Engwall
June	Systematic Reviews	Dr. Misa Mi

A total of 135 participants were recorded over the 12 sessions including OUWB faculty, Beaumont physicians, residents, librarians, and Beaumont staff. Participation was fairly distributed between Royal Oak (n=79) and Troy (n=56) this year with highest attendance recorded at the ‘Introduction to Evidence-Based Medicine,’ ‘Searching PubMed’ and ‘EBM Resources’ sessions with 98 participants between the three. In addition, 115 of 135 (85.1%) participants applied for and received CME credit compared to last year where only 51% of participants claimed CME credit. Attendance also provided Meaningful Participation credit to those who hold faculty appointments at the OUWB School of Medicine.

Based on evaluation data collected from the Beaumont Continuing Medical Education Office, the series has continued to receive phenomenal feedback, with participants remarking on the applicability of the sessions to their clinical practice and scholarly pursuits. 94.8% of respondents (n=115) agreed that the series should be continued as an annual CME and 99.1% believed content was relevant to their professional needs. Table 11 provides a snapshot of participant comments about the series.

Table 11: Participant Comments about the Continuing Medical Education Series

Please give an example of at least 1 action you plan to take to change your practice.
“I realize I can use this new technology to search for literature to improve my practice”
“[I] will take advantage of access to Cochrane Reviews on the Beaumont website in both my patient care and teaching; I did not know this was available”
“Access the medical information sites on a more frequent basis, perhaps daily, adding to accuracy and improvement of patient care”
“I will use the tools for tracking impact/h-index as a relative reflection of my scholarly affect in my area of

practice and will use discussed tools to help determine best biomedical journal to submit manuscripts ”

“Use PubMed to search best practices while precepting/supervising residents”

“I am learning how to construct a research question and educate medical students and residents”

“Already have used information presented to look up articles on PubMed related to LDL cholesterol. Presentation was very good and practical”

“I have been using the sources to look at evidence for various medical issues”

“When a treatment decision presents itself, I plan to look at the current data regarding its efficacy and safety”

“Improve search skills for evidence based medicine”

“Very good seminar, I learned better ways to search new medical information relevant to my practice. This CME definitely should be continued and advertised to other BHS physicians”

“Review any new teaching to students, and put it in context of the PICO principles”

“Investigate further the teaching of EBM in our medical system”

“We will be implementing EBM into our practical teaching of the med students upon their arrival at the clinical sites”

“Additionally, I will use real time questions during rounds and ask the student/resident how they would research EBM data to provide an answer--this will provide me the opportunity to work together on teaching and learning new search techniques”

FACULTY LEARNING COMMUNITY Dr. Misa Mi applied for and received a \$1,500 grant from the Oakland University Provost to create a faculty learning community on medical education research focusing on scholarly teaching and scholarship of teaching. Dr. Mi scheduled a yearlong educational program with different types of learning activities including seminars, workshops, and research forums. The full program schedule is posted on the Learning Community’s wiki at <http://somfacultylearningcommunity.wikispaces.com>. All OU faculty were invited and encouraged to participate in the following events for this year:

- Friday, August 10, 2012: **The H-Index & Journal Impact Factors: Reliable Tools to Evaluate Your Scholarly Work?** Facilitator: Stephanie Swanberg, MSI, Assistant Professor, Oakland University William Beaumont School of Medicine Library
- Friday, August 24, 2012: **Alternative Ways of Publishing Your Educational Research Work.** Facilitator: Misa Mi, PhD, Associate Professor, Oakland University William Beaumont School of Medicine Library.
- Friday, September 7, 2012: **Introduction to Rubrics.** Facilitator: Judith Ableser, PhD, Director of the Center for Excellence in Teaching and Learning, Oakland University.
- Friday, September 28, 2012: **Research Forum.** Faculty members across disciplines will be invited to present on their teaching projects and educational research work. Facilitator: Misa Mi, PhD, Associate Professor, Oakland University William Beaumont School of Medicine Library.
- October 12, 2012: **Situated Learning in Medical Education.** Presenter: Jennifer Eastwood, PhD, Assistance Professor, Department of Biomedical Sciences, Oakland University William Beaumont School of Medicine
- October 26, 2012: **Student Peer Assessment Process Using Adobe Forms Database Software: An Education Innovation Showcase.** Presenter: David Rodenbaugh, PhD, Assistance Professor, Department of Biomedical Sciences, Oakland University William Beaumont School of Medicine

- November 9, 2012: **Cognitive Overload: How to Present Information Your Students.** Presenter: Jill Stefaniak, MTD, CPLP, Director of Education Training, Oakland University William Beaumont School of Medicine
- November 20, 2012: **Brain à la Mode: How Chess Expertise Informs Education.** Presenter: Barbara Oakley, PhD, Associate Professor, Department of Industrial & Systems Engineering, School of Engineering and Computer Science, Oakland University
- December 7, 2012: **Online Tools for Collaboration.** Presenter: Keith Engwall, MSLIS, Assistant Professor and Web & Emerging Technologies, Oakland University William Beaumont School of Medicine
- December 9, 2012: **Closing Retreat of the Faculty Learning Community** hosted by Misa Mi, PhD, Associate Professor, Oakland University William Beaumont School of Medicine Library

ADDITIONAL FACULTY DEVELOPMENT

MedEdPortal Faculty Development Workshop – Submitting Educational Resources to MedEdPortal: Navigating Copyright Nancy Bulgarelli and Stephanie Swanberg presented the last of a series of workshops coordinated by Rick Sabina. The workshop was offered on the OU campus on April 26 and again at Beaumont, Royal Oak, on May 5, 2013. Fifteen faculty members participated.

2nd Annual William M. Davidson Medical Education Week Medical Library faculty participated on the programming team for this year’s Medical Education Week and coordinated the following events:

- **Using Social Media in Medical Education** – Misa Mi co-coordinated this event with Keith Engwall presenting ‘Twitter Basics’ to OUWB faculty and staff on May 13 at Beaumont Hospital Royal Oak.
- **Twitter MedEdWk2013 backchannel** – OUWB’s Med Ed Week was documented on Twitter for the first time with Keith Engwall registering the hashtag #MedEdWk13. Over the week, 13 participants sent 133 tweets. A transcript of tweets is available at The Healthcare Hashtag Project via Symplur.com at <http://bit.ly/12GKGcs>.
- **Poster Session & Brief Remarks** – Stephanie Swanberg co-coordinated Med Ed Week posters this year. For the first time, posters were peer-reviewed and four submissions were selected for oral presentations. Stephanie moderated the Poster Session on May 14 at Beaumont Hospital Royal Oak.

ELI Webinar Series The Medical Library sponsored this 3-part series on “Evaluating Mobile Learning,” which was offered through Educause. Viewings took place on February 15th, 26th and March 6th.

RESIDENTS

Southeast Michigan Center for Medical Education (SEMCMC) Workshop Series In October 2012, Stephanie Swanberg partnered with Dr. Victoria Lucia to develop and co-teach ‘Research Design in Published Reports’ as part of a four-part research series held at Providence Hospital targeting hospital residents. The session covered strategies for quickly appraising the medical literature with a brief introduction to evidence-based medicine and the major evidence-based resources.

Reference

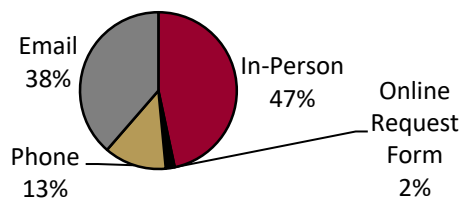
During the past year, the Medical Library recorded 625 total patron encounters, touching 1918 people and clocking 493.95 hours on instruction, reference, research consultations and literature searches. Reference accounted for the highest number of requests, but instruction dominated in participants and hours, accounting for 55.8% of total hours. Compared to last year, statistics increased remarkably with a 79.2% increase in the number of patron requests, a 92% increase in the number of people touched and a 224.65% increase in the total number of hours (see Table 12).

Table 12: Patron Encounters FY 2011 - 2013

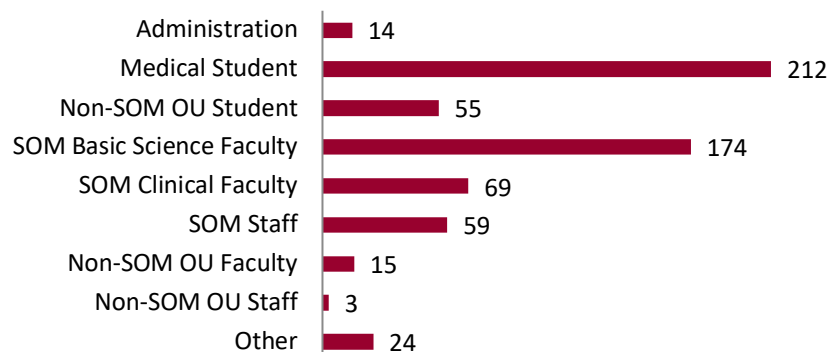
Request Type	Sessions			Participants			Hours		
	FY 12-13	FY 11-12	% Change	FY 12-13	FY 11-12	% Change	FY 12-13	FY 11-12	% Change
Instruction	101	81	--	1449	662	--	275.82	90.93	--
Reference	353	226	--	293	228	--	63.53	17.37	--
Research Consultation/ Lit Searches	171	86	--	176	109	--	154.6	40.66	--
Total	625	393	59.03% increase	1918	999	92% increase	493.95	148.96	231.60% increase

This year, in-person requests (n=279) outnumbered email (n=231) as the most common method of contacting the library. Just as in the previous year, a majority of requests (84.5%) originated from OUWB administration faculty, students, and staff, but this year more requests originated from medical students (n=212) than basic science faculty (n=174) - a shift from the previous year's statistics.

Method of Contact



Status of User (n=625)



Collections

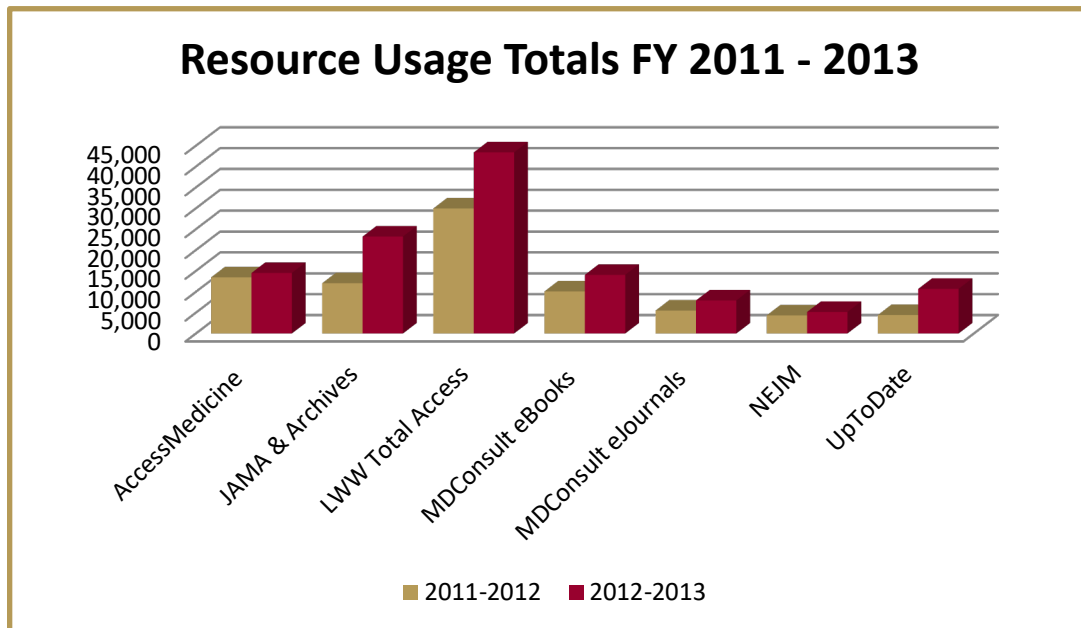
As the OUWB curriculum and community grows so does the necessity for more specialized resources to fulfill the requirements of teaching, learning, and scholarly activities of the OUWB's faculty, students, and staff. Over the last year, the Medical Library has added and renewed a number of databases, journals and books. Table 13 showcases our major expenditures and acquisitions; Table 14 displays the number of downloads from our major resources for the year and the percentage change in usage from the previous year.

Table 13: 2012-2013 Major Expenditures and Acquisitions

Name	Resource Type	Cost
Acland's Video Atlas of Human Anatomy [renewal]	Streaming Video	REDACTED
Annals of Internal Medicine [renewal]	eJournal	REDACTED
Annals of Internal Medicine (backfiles)	eJournal Archive	REDACTED
Cochrane Library [renewal]	Database	REDACTED
Dynamed (renewal)	Database	REDACTED
EMBase	Database	REDACTED
First Aid eBook Collection	eBook Collection	REDACTED
HaPI - Health & Psychosocial Instruments	Database	REDACTED
JAMA Network License (renewal)	eJournal Package	REDACTED
JAMA Evidence	Database	REDACTED
Journal Citation Reports (renewal)	Database	REDACTED
LWW Health Library Premium Collection	eBook Package	REDACTED
LWW Total Access Journal Collection [Renewal]	eJournal Package	REDACTED
LWW Extended Archive Collection	eJournal Archive	REDACTED
MDConsult (renewal)	Database	REDACTED
MDConsult Dermatology Collection	eBook Collection	REDACTED
Natural Standard	Database	REDACTED
NetterInterAct (renewal)	Database	REDACTED
NetterPresenter (renewal)	eBook Package	REDACTED
New England Journal of Medicine (renewal)	eJournal	REDACTED
Ovid eBooks [New Editions]	eBook Package	REDACTED
Primal Pictures	Database	REDACTED
R2 eBook Collection	eBook Collection	REDACTED
Science [Renewal]	eJournal	REDACTED
ScienceDirect eJournals (renewal)	eJournals	REDACTED
Scopus	Database	REDACTED
Scriver's OMMBID	Database	REDACTED
STAT!Ref	eBook Collection	REDACTED
Thieme Clinical Collection	eBooks	REDACTED
UpToDate [Renewal]	Database	REDACTED

Table 14: 2012-2013 Major Resource Downloads

Resource	July - September 2011	October - December 2011	January - March 2012	April - June 2012	Total	% Change from FY 11-12
AccessMedicine	3,709	4,272	5,309	1,222	14,512	+7.9%
JAMA & Archives Journal Collection <i>(Note: Includes Beaumont Hospital use)</i>	3,631	7,317	7,395	4,896	23,239	+92.87%
LWW Total Access Journal Collection	6,285	11,432	15,870	9,807	43,394	+44.85%
MDConsult eBooks	5,530	2,885	3,733	1,913	14,061	+39.48%
MDConsult eJournals	1221	2,128	2,936	1,639	7,924	+44.07%
New England Journal of Medicine	881	1,640	1,542	1,100	5,163	+19.05%
UpToDate	1781	2,337	3,439	3,134	10,691	+141.66%
Total	23,038	32,011	40,224	23,711	118,984	+49.11%



RESOURCE TRIALS The Medical Library also trialed several resources throughout the year: AccessPhysiotherapy, BrowZine, Clinical Key, ePocrates, EMBase, HaPI LWW Health Library Basic Sciences Premium Collection, Scopus. After feedback from library faculty and staff and users, the library purchased BrowZine, EMBase, HaPI, LWW Basic Sciences Premium Collection, and Scopus.

ACQUISITIONS PROCESS IMPROVEMENT PROJECT The Medical Library ended a one-year process improvement pilot project designed to reduce the turn-around time for acquiring and cataloging new materials concluding that the process did not achieve desired outcomes. A new process has been developed with Shirley Anderson taking responsibility for cataloging materials. Physical processing of materials is completed by student workers in the Kresge Library Technical Services Department.

LIBRARY LIAISON PROGRAM The library continued its liaison program with each library faculty member assuming responsibility for specific courses and disciplines. Liaison responsibilities include collection development, course guide creation, and faculty support. The following course pages were developed this year using SubjectsPlus:

- Behavioral Science Course Guide. [Internet]. Rochester: Oakland University William Beaumont School of Medicine Library; 2013. Available at:
<http://research.library.oakland.edu/sp/subjects/guide.php?subject=MDM29322>
- Endocrinology Course Guide [Internet]. Rochester: Oakland University William Beaumont School of Medicine Library; 2012. Available at:
<http://research.library.oakland.edu/sp/subjects/guide.php?subject=MDM29314>
- Gastroenterology & Hepatology Course Guide. [Internet]. Rochester: Oakland University William Beaumont School of Medicine Library; 2012. Available at:
<http://research.library.oakland.edu/sp/subjects/guide.php?subject=MDM29310>
- Hematopoetic & Lymphatic Course Guide. [Internet]. Rochester: Oakland University William Beaumont School of Medicine Library; 2013. Available at:
<http://research.library.oakland.edu/sp/subjects/guide.php?subject=MDM29320>
- Integrative Evidence-Based Medicine Course Guide. [Internet]. Rochester: Oakland University William Beaumont School of Medicine Library; 2013. Available at:
<http://research.library.oakland.edu/sp/subjects/guide.php?subject=MDM29226>
- Male and Female Reproductive Course Guide. [Internet]. Rochester: Oakland University William Beaumont School of Medicine Library; 2012. Available at:
<http://research.library.oakland.edu/sp/subjects/guide.php?subject=MDM29316>
- Musculoskeletal, Connective Tissue, and Skin Course Guide. [Internet]. Rochester: Oakland University William Beaumont School of Medicine Library; 2012. Available at:
<http://research.library.oakland.edu/sp/subjects/guide.php?subject=MDM29318>
- Neuroscience Course Guide. [Internet]. Rochester: Oakland University William Beaumont School of Medicine Library; 2012. Available at:
<http://research.library.oakland.edu/sp/subjects/guide.php?subject=MDM19120>
- Psychopathology Course Guide. [Internet]. Rochester: Oakland University William Beaumont School of Medicine Library; 2013. Available at:
<http://research.library.oakland.edu/sp/subjects/guide.php?subject=MDM29324>

- Public Health Topic Guide. [Internet]. Rochester: Oakland University William Beaumont School of Medicine Library; 2012. Available at:
<http://research.library.oakland.edu/sp/subjects/guide.php?subject=ph>
- Renal and Urinary Course Guide. [Internet]. Rochester: Oakland University William Beaumont School of Medicine Library; 2012. Available at:
<http://research.library.oakland.edu/sp/subjects/guide.php?subject=MDM29312>

New Collection Initiative: Doctors as Authors The Medical Library debuted a new collection initiative this year: Doctors as Authors. The collection features books written by physicians including fiction, biographies, and travel. With faculty recommendations, we hope to build this collection and feature a new book in each month's newsletter. The original collection includes:

- Cutting for Stone by Dr. Abraham Verghese
- My Own Medicine: A Doctor's Life as a Patient by Dr. Geoffrey Kurland
- Stiff: The Curious Lives of Human Cadavers by Dr. Mary Roach
- To Heaven and Back: A Doctor's Extraordinary Account of Her Death, Heaven, Angels, and Life Again by Dr. Mary C. Neal

Website

The Medical Library website underwent major changes this year thanks to our Web and Emerging Technologies Librarian, Keith Engwall. Several new pages were introduced throughout the year and many were redesigned for easier navigation and discovery of information on our resources and services.

NEW PAGES:

- **Clerkship Textbooks:** http://library.oakland.edu/medical/som/textbooks_clerkship.php
- **Liaison Responsibilities:** <http://library.oakland.edu/medical/liaison.htm>
- **M1 Textbooks:** http://library.oakland.edu/medical/som/textbooks_m1.php
- **M2 Textbooks:** http://library.oakland.edu/medical/som/textbooks_m2.php
- **Off-Campus Access for Beaumont-Based Faculty:** <http://library.oakland.edu/medical/information/getnetid.htm>
- **Orientation 2012:** http://library.oakland.edu/medical/som/orientation_2012.htm

REDESIGNED PAGES:

- **Find Books:** <http://library.oakland.edu/medical/books.htm>
- **Library Information:** <http://library.oakland.edu/medical/information/index.htm>
- **Resources for Mobile Devices:** <http://library.oakland.edu/medical/mobile.htm>
- **Staff Directory:** <http://library.oakland.edu/medical/people/index.htm>

NEW SERVICES:

- **Ask a Medical Librarian Online Request Form:** http://library.oakland.edu/medical/ask_medical_form.php
- **Research Consultation Calendar** allowing students to self-schedule mandatory meetings with library faculty to review progress on the literature reviews for their Capstone projects.
- **Text-Messaging** option for asking reference questions
- **Virtual Medical Library Tour:** <http://www.youtube.com/watch?v=yYR9NbT6tnk&feature=youtu.be>

Author	Title	Year	Publisher
Agur, Dalley	Gray's Atlas of Anatomy, 13th Ed.	2012	Lippincott Williams & Wilkins
Olney, MacPherson, Ross	Atlas of Anatomy, 2nd Ed.	2012	Thieme
Harkin, Morse, Bennett-Clarke	Clinical Anatomy: A Case Study Approach, 1st Ed.	2013	McGraw-Hill
Lambert	Lippincott's Illustrated Q & A Review of Anatomy & Embryology	2011	Lippincott Williams & Wilkins
Linker	Gray's Anatomy Review	2010	Churchill Livingstone
Moore, Agur, Dalley	Essential Clinical Anatomy, 4th Ed. Required	2011	Lippincott Williams & Wilkins
Netter	Atlas of Human Anatomy, 5th Ed.	2011	Elsevier

People

Staff Directory
Liaison Assignments
Contact Us
Ask a Medical Librarian

Location / Map
Kroge Library 1st Floor

Services

Research Consultations
References

Meet the Medical Library Staff

Nancy Bulgarelli
Medical Library Director
Room 3008
248-370-2483
bulgare@oakland.edu

Mia He
Associate Professor
Room 130
248-370-3719
mhe@oakland.edu

Resources for Mobile Devices

Apps & Mobile Web Resources
Click the icon to link to app

DrawMD Anatomy/Clinical Sketch Apps
DrawMD Anesthesia & Critical Care (Free)
DrawMD Cardiology (Free)
DrawMD ENT (Otolaryngology) (Free)
DrawMD Female Pelvic Surgery (Free)
DrawMD General Surgery (Free)

Categories
DrawMD Anatomy/Clinical Sketch Apps
Drug Information
Literature Search
Medical Books
Study Tools

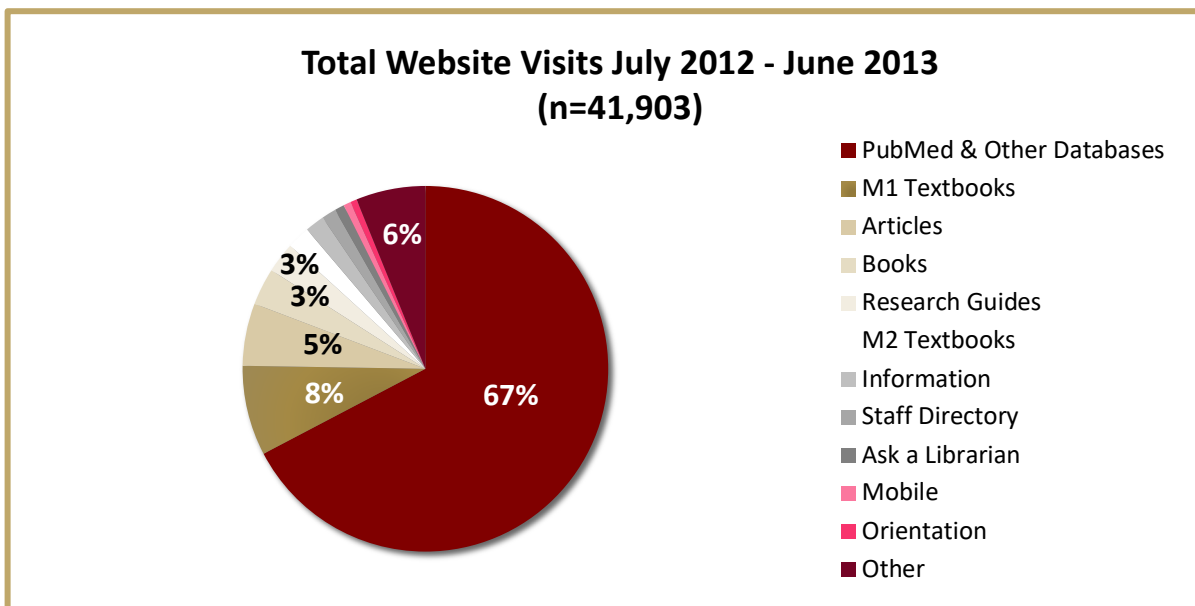
Legend
iOS App
Android App

Website Analytics Since January 2012, the Medical Library has been using Google Analytics to track the website's traffic. Over the last year and a half, 54,097 visits have been recorded with 77.5% of users visiting the website within the last year. When comparing January - June 2012 to January – June 2013, traffic has increased by 87%.



A majority of site visits were to PubMed or other databases linked from the website at 67%, with the other top five most visited pages being:

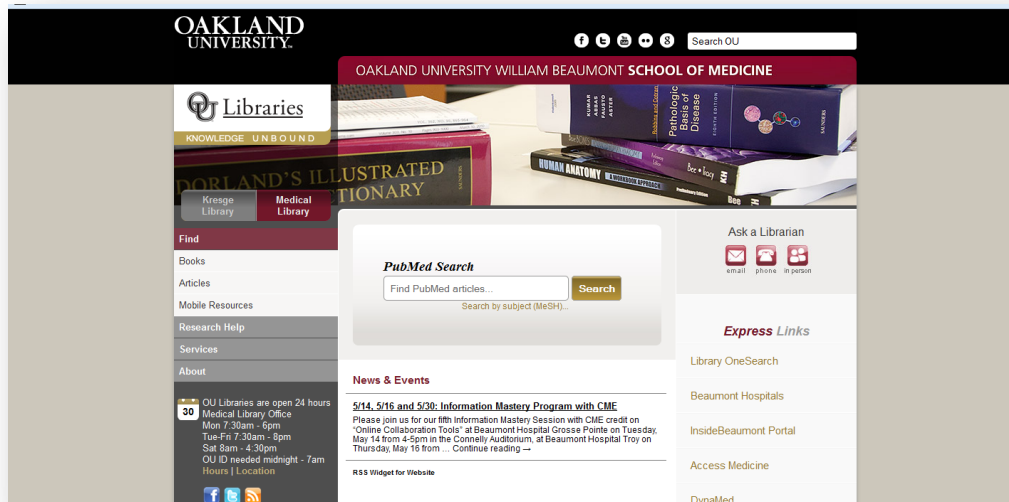
- M1 Textbooks (8%)
- Other (6%)
- Find Articles (5%)
- Find Books (3%)
- Research Guides (3%)



Library Website Redesign Keith Engwall continues to work with Mariela Hristova, Coordinator of Web Services at Kresge Library, and the Oakland Libraries Online User Interface team in the full redesign of the Medical and University Libraries' websites. The Medical Library unveiled the prototype for its new web site design in June. It can be seen at <http://medlibbeta.oakland.edu>.

The new site uses “responsive design” to automatically resize for different devices such as table and mobile phones. This summer, content began to be ported from the old site and was streamlined to improve clarity. The structure was reorganized to emphasize ease of navigation. Links to related School of Medicine resources (such as the School of Medicine and Beaumont web sites) were given a top-level menu – “OUWB” – to provide users with more obvious paths to these sites.

The site will be given a “soft launch” (users will initially be invited to preview it as a beta site, and will gradually be directed to it with increasing emphasis over the fall semester) to give users time to transition to the new site and opportunity to provide feedback before the old site is replaced.



Peer Evaluation System Development Keith Engwall and David Rodenbaugh began exploring the development of a web-based peer evaluation and faculty review system for use by M1 and M2 students in assessing their TBL teammates and by faculty in reviewing the students’ qualitative assessment skills.

Integration of Proxy Server with campus LDAP (Net ID) authentication system – Keith Engwall worked with Eric Condic and University Technology Services to allow the proxy server to use the campus LDAP database to authenticate patrons with their Net ID rather than the current manual authentication using full name and Grizzly ID. This will allow the proxy server to conform to other campus authenticated resources and identify patrons by type for licensing purposes, making it easier for Beaumont-based faculty to access OUWB Medical Library resources. Instructions for obtaining a NetID are available on the Setting Up Off-Campus Access to OUWB Medical Library Resources page:

<http://library.oakland.edu/medical/information/getnetid.htm>

Community Engagement & Outreach

EVENTS

The Medical Library hosted or co-hosted a number of events and for the first time integrated information mastery concepts into the School of Medicine's greater community engagement and outreach initiatives.

- **Michigan Libraries for Life Donor Registration Drive** On October 2, 2012 the Medical Library participated in a state-wide donor registration drive in collaboration with 27 other state libraries and Gift of Life Michigan. The library hosted the drive for seven hours in the Kresge Library Lobby with eight volunteers, including four medical students, and encouraged Oakland University students, faculty, and staff to register as organ, eye, and tissue donors. A total of 339 people were touched by the event, which registered 62 new donors. Volunteers spoke with 238 already registered donors and passed out information to 39 potential donors.



- **Make A Difference Day** On Saturday, October 27 the Medical Library participated in the OUWB-hosted AED Awareness Fairs at Avondale and Harper Woods High Schools in recognition of Make A Difference Day, a nationally recognized day of community service. The health fair targeted high school students and their families to raise awareness of automated external defibrillators at school and in the community. The library display promoted MedlinePlus, the National Library of Medicine's premier website for free and reliable consumer health information.
- **Sudden Infant Death Syndrome Lunch 'n Learn** As part of the formally established Diversity Programming Team, the Medical Library co-hosted this lunch 'n learn for OUWB students, faculty, and staff to raise awareness of SIDS during Sudden Infant Death Syndrome Month. The event was also integrated with the M2 students Reproductive Course. The session featured Dr. Mary Smyth, Head of Ambulatory Pediatrics at Beaumont Children's Hospital and Medical Director of the Child Advocacy and Protection Team and Mary Machowicz of Tomorrow's Child, a non-profit organization



providing counseling services for SIDS families.

- **Martin Luther King Jr. Day of Service** On January 18, 2013 Stephanie Swanberg and Keith Engwall participated in the OUWB-hosted Family Health Fair and Tastefest at Chandler Park Academy. The fair's purpose was to educate members of the community on a variety of health-related topics and work inter-professionally to promote health and wellness. The library display promoted MedlinePlus, the National Library of Medicine's premier website for free and reliable consumer health information. Information was distributed to 32 members of the community.



- **The Butterfly Effect: Lupus in our Community** In support of the Diversity Programming Team, the Medical Library co-hosted this lunch 'n learn for OUWB students, faculty, and staff to raise awareness of lupus on campus during OU's African American Celebration Month. The event was also integrated with the M2's Musculoskeletal course. The session featured "Lupus, My Story," a live presentation from a patient living with lupus and a follow-up discussion with Dr. Diane Morris, the patient's primary care physician. A total of 60 people attended the event from the OUWB



- **When Religion and Medicine Collide: An Intimate Conversation with People of Different Faiths** The Diversity Programming Team presented their third and final program of the year featuring a discussion of how four faiths balance religion and medicine: Islam, Jehovah's Witness, Church of Jesus Christ of Latter-day Saints, and Seventh-day Adventists. The event touched on themes taught throughout the curriculum on religion, spirituality, culture, and cultural competency as the M2 students prepared to enter their clerkships. A total of 54 OUWB students, faculty, and staff attended.

Following each diversity event, a brief evaluation was sent to attendees for feedback regarding the program. When asked to describe what they learned from the program, comments included:

- "Personal narratives...really drove the points home for me."
- "The patient perspective was very powerful. I enjoyed that the most."
- "I was reminded of how careful we need to be to maintain the confidence of our clients/patients/students, etc."
- "I'd like to continue see things that are aligned to our curriculum. The more relevant the topic is to our future as medical students and physicians, the more likely we are to learn useful information and enjoy the experience."

- “The interaction and discussion from the information presented was awesome. The topic was eye opening.”

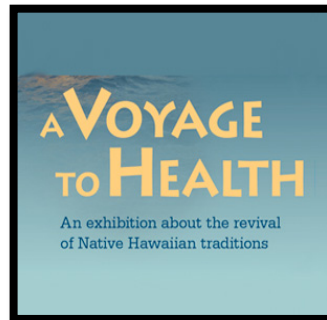
- **Future Physicians Summer Enrichment Program** Misa Mi and Stephanie Swanberg participated in this OUWB-sponsored program targeting high school students interested in medicine and careers in the health sciences by teaching ‘Health Information for Healthy Lifestyles’ a one-hour session focused on locating reliable health information online using MedlinePlus and PubMed on June 14 and July 8. The program taught 14 local high school students.

EXHIBITS

The Medical Library hosted two National Library of Medicine Traveling Exhibits this year:

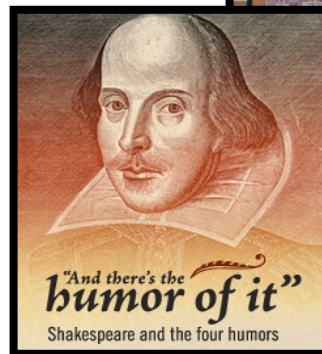
A Voyage to Health explored the resurgence of Native Hawaiian culture to heal the soul of the community focusing on Kaho'olawe, traditional voyaging. The exhibition touched on the history of voyaging, Kaho'olawe and the Hawaiian Movement, and the legacy and revival of the voyaging tradition.

The exhibit was displayed in the Kresge Library Lobby from August 1st – September 22, 2012 and was featured during medical student orientation as well as the greater university's Academic Open House.



“And There’s the Humor of It”: Shakespeare and the Four Humors

The Medical Library hosted this exhibit from April 8 - May 17, 2013 which highlighted the Renaissance theory of the four bodily humors: blood, bile, melancholy, and phlegm as portrayed in Shakespeare's comedies and tragedies. The exhibit was displayed in the Kresge Library lobby at Oakland University and then relocated to Beaumont Hospital, Royal Oak, during Medical Education Week.



The Medical Library has also booked the following National Library of Medicine traveling exhibits over the next four years:

- *The Henkel Physicians: A Family's Life in Letters*: September 9 - October 19, 2013
- *Harry Potter's World: Renaissance Science, Magic, and Medicine*: January 13 - February 22, 2014
- *Against the Odds: Making a Difference in Global Health*: July 14 - August 23, 2014
- *Every Necessary Care and Attention: George Washington and Medicine*: July 6 - August 15, 2015

- *Life and Limb: The Toll of the American Civil War*: August 1 - September 10, 2016
- *Binding Wounds, Pushing Boundaries: African Americans in Civil War Medicine*: February 6 - March 18, 2017

MEDICAL LIBRARY NEWS – LIBRARY NEWSLETTER The Medical Library published 12 issues of our monthly newsletter this past year with Stephanie Swanberg continuing as editor. Each month the newsletter included a feature story, student corner, faculty corner, resource updates, and often a technology-related piece. The purpose of the newsletter is to reach out to OUWB faculty, students, and staff to share information about new library resources and activities; provide tips and techniques for using information tools; and to foster scholarly communication within the OUWB School of Medicine.

All issues are archived and available at <http://library.oakland.edu/medical/information/Newsletter.htm>

Service

Medical library faculty and staff have been busy supporting the OUWB, Oakland University, and professional organization communities by serving on a number of committees, task forces, and groups and providing guidance and leadership in a number of positions.

- **Nancy Bulgarelli**

- Chair, OUWB Committee on Student Awards
- Chair, OUWB Medical Library Committee
- Co-Chair, Michigan Health Sciences Libraries Association (MHSLA) 2012 Conference Planning Committee (state)
- Secretary, OUWB Curriculum Evaluation Subcommittee
- Board Member, OUWB Center for Excellence in Medical Education Advisory Board
- AAHSL Program Committee (national)
- OUWB Curriculum Committee
- OUWB M1/M2 Curriculum Subcommittee
- OUWB Program Evaluation Committee
- OUWB Medical Education Week 2013 Planning Committee
- OUWB LCME Self-Study Taskforce, Educational Resources
- University Libraries Administrative Leadership Team
- University Libraries Operations, Assessment, and Management Group

- **Keith Engwall**

- Co-Convener, New Members Special Interest Group, Medical Library Association (national)
- Chair, Nominating Committee, Metropolitan Detroit Medical Library Group (local)
- Chair, OUWB Ad Hoc Multimedia Grant Award Committee
- Metropolitan Detroit Medical Library Group (MDMLG) Program Committee (local)
- Medical Library Association (MLA) Official Conference Blogger Annual Meeting 2013 (national)
- MLA Research Agenda Systematic Review Team (national)
- OUWB Ad Hoc Research Committee
- OUWB Course, Faculty, and Student Evaluations Policy Review Task Force
- OUWB Faculty Mentoring Committee
- OUWB Ad Hoc Mentoring Policy Committee
- University Libraries Electronic Resource Management Task Force
- University Libraries Information Literacy Group
- University Libraries Integrated Systems and Data Committee
- University Libraries Integrated Library System (ILS) Investigation Task Force
- University Libraries Library Technologies Team
- University Libraries Online User Interface Committee
- University Libraries Reference Group

- **Misa Mi**

- Chair, MDMLG Membership Committee
- Chair, OUWB Committee on Capstone Projects
- Secretary, OUWB Faculty Assembly
- Board Member, Advisory Board for Center for Excellence in Teaching and Learning of Oakland University
- Board Member, OUWB Center for Excellence in Medical Education Advisory Board

- MDMLG Executive Committee (local)
- MDMLG Program Committee (local)
- MLA Continuing Education Committee (national)
- OUWB Faculty Evaluation Ad Hoc Committee
- OUWB Inter-professional Education Ad Hoc Committee
- OUWB LCME Accreditation Education Standards Programming Evaluation Committee
- OUWB Medical Education Week 2013 Planning Committee
- OUWB Program Evaluation Committee

- **Stephanie Swanberg**

- President-Elect, MDMLG (local)
- Chair, MDMLG Program Committee (local)
- Chair, MHSLA Nominating Committee (state)
- Secretary, OUWB Faculty Assembly
- Secretary, OUWB Curriculum Integration Subcommittee
- Board Member, OUWB Center for Excellence in Medical Education Advisory Board
- AAHSL InfoShare Task Force (state)
- MHSLA 2012 Conference Planning Committee (state)
- MLA Research Agenda Systematic Review Team (national)
- OUWB Departmental Seminar/Journal Club Ad Hoc Committee
- OUWB Diversity Council
- OUWB Faculty Awards Committee
- OUWB LCME Self-Study Task Force, Faculty Self Study Group
- OUWB Medical Education Week 2013 Planning Committee
- University Libraries LibQual+ Study Task Force
- University Libraries Events and Exhibits Committee
- University Libraries Facilities Advisory Committee
- University Libraries Plagiarism Course Ad Hoc Group

- **Shirley Anderson**

- University Libraries Technical Services Committee

- **Evan Sprague**

- University Libraries Electronic Resource Management Task Force
- MDMLG Program Committee (local)

Scholarly Activities

SCHOLARLY ARTICLES

- Afonso N, Kavanagh M, **Swanberg S**, Band J. "Flu Ends with U" Influenza Vaccine Toolkit for Teaching Health Professional Students. *MedEdPORTAL*; 2013. Available from: www.mededportal.org/publication/9417
- Greer K, **Swanberg S**, Gunn M, Switzer A, Daniel D, Wynn-Purdue S. Beyond the Web Tutorial: Development and Implementation of an Online, Self-directed Academic Integrity Course at Oakland University. *The Journal of Academic Librarianship*. 2012; 38(5): 251-258.
- **Mi M**. Factors that influence effective evidence-based medicine instruction. *Medical Reference Services Quarterly*. 2013; 32(4).
- **Mi M**, Stefaniak J, Solomonson W. Application of Web 2.0 Technologies in Enhancing Teaching and Learning in Medical Education. *MedEdPORTAL*; 2012. Available from: <http://www.mededportal.org/publication/9290>.
- **Mi M**. Evidence-based medicine in undergraduate medical education: a literature review. *Evidence Based Library and Information Practice*. 2012; 7(3): 98-120.
- Wu L. & **Mi M**. Librarian vitality: An embedded librarianship model for health science libraries. *Medical Reference Services Quarterly*. 2013; 32(3): 257-265.

SCHOLARSHIPS, GRANTS & AWARDS

- **Bulgarelli N**. TEDMED Front Line Scholars Award, \$2,500 partially funded attendance to TEDMED 2013 in Washington D.C.
- **Mi M**. National Network of Libraries of Medicine (NN/LM) Planning & Needs Assessment Grant, \$2,500
- **Mi M**. AAHSL Leadership Scholarship, \$2,500 partially funded attendance to Harvard Macy Institute Program for Educators in Health Professions in Boston, MA
- **Swanberg S**. National Network of Libraries of Medicine (NN/LM) Professional Development Award, \$800 funded attendance to the NN/LM Disaster Communication Summit in Chicago, IL
- **Swanberg S**. Oakland University African American Celebration Month Award, \$300

CONFERENCE ACTIVITIES

- *Invited Speakers*
 - **Engwall K**. Twitter Basics. 2nd Annual William M. Davidson Medical Education Week, Oakland University William Beaumont School of Medicine, Royal Oak, MI, May, 2013
 - **Swanberg S**. Reference Management Software Panel: RefWorks. Metropolitan Detroit Medical Library Group Fall Meeting, Royal Oak, Michigan, September 2012
- *Lightening Round Presentations*
 - **Mi M**. Expanding a Librarian's Role through Building and Managing a Faculty Learning Community. Michigan Health Sciences Libraries Association Annual Conference, Novi, Michigan, October 2012

- *Peer-Reviewed Papers*
 - **Engwall K.** Getting Started with Twitter: So THAT'S What I'm Supposed To Do. Metropolitan Detroit Medical Library Group, Ann Arbor, Michigan, March 13, 2013
 - **Engwall K.** Securing your Research Data. Michigan Academy of Science, Arts & Letters, Holland, Michigan, March 2013
 - **Mi M, Swanberg S, Bulgarelli N.** Harnessing the Classroom Action Research Model to Enrich Information Literacy Instruction Techniques in the M1 Curriculum. Medical Library Association Annual Meeting, Boston, Massachusetts, May 2013
 - Reed-Hendon C, **Swanberg S**, Harriott M, Jurva S. Education Awareness Series of Multicultural Issues in Health for First-Year Medical Students. National Association of Medical Minority Educators Annual Conference, Washington DC, September 2012
 - **Swanberg S**, Harriott M, Jurva S, Reed-Hendon C, Yeow R. Highlighting Health Disparities in the Local Community by Integrating Lupus Awareness into a University-Wide African American Celebration Month. Michigan Academy of Science, Arts & Letters, Holland, Michigan, March 2013

- *Peer-Reviewed Posters*
 - Eastwood, J, Rodenbaugh DW, Sabina R, Krug E, Poznanski A, **Mi M**, Joyce B. A Socioscientific Issues Model for Integration of the Medical Sciences, Social sciences, and Medical humanities. The 4th International Conference of the Association of Biochemistry Course Directors, Santa Fe, New Mexico, May 2013
 - Eastwood, J, Rodenbaugh DW, Sabina R, Krug E, Poznanski A, **Mi M**, Joyce B. A Socioscientific Issues Model for Integration of the Medical Sciences, Social sciences, and Medical Humanities. Experimental Biology Conference, Boston, Massachusetts, April 2013
 - Eastwood J, Rodenbaugh DW, **Mi M**. Using Socioscientific Issues to Integrate the Sciences and Humanities in Preclinical Medical Education. Association of American Medical Colleges Central Group on Educational Affairs Annual Meeting, Cincinnati, Ohio, March 2013
 - Kavanagh M, Afonso N, Thompson B, **Swanberg S**, Band J. Longitudinal Assessment of an Integrated Educational Program Using Influenza Vaccination and Prevention. Central Group on Educational Affairs Spring Meeting, Cincinnati, Ohio, March 2013
 - **Mi M**, Stefaniak J, Pugh R, Afonso N. Community Needs Assessment for Health Information Outreach Education Program. 2nd Annual William M. Davidson Medical Education Week, Oakland University William Beaumont School of Medicine, Royal Oak, MI, May, 2013
 - **Mi M**, Eastwood J. A Librarian's Multiple Roles in Establishing, Organizing, and Facilitating a Faculty Learning Community to Promote Scholarly Teaching and Medical Educational Research. Medical Library Association Annual Meeting, Boston, MA, May 2013
 - **Mi M, Swanberg S, Bulgarelli N.** Cultivating Faculty's Role Modeling for Medical Students through a Library Faculty Development Program. Medical Library Association Annual Meeting, Boston, MA, May 2013

- **Mi M**, Gould D. Use of a Wiki as a Collaborative Learning Tool to Promote Active Learning in a Neuroscience Course for First-Year Medical Students. American Association of Anatomists, Boston, MA, April 2013
- **Mi M**, Gould D. Project-Based Learning With a Wiki Site to Promote Active Learning in a Neuroscience Course for First-Year Medical Students. Association of American Medical Colleges Central Group on Educational Affairs Annual Meeting, Cincinnati, Ohio, March 2013
- **Mi M**, Eastwood J. Developing a Faculty Learning Community to Promote Scholarly Teaching and Medical Educational Research. Association of American Medical Colleges Central Group on Educational Affairs Annual Meeting, Cincinnati, Ohio, March 2013
- **Mi M, Swanberg S, Engwall K, Bulgarelli N**. Architecting Learning Contexts to Support First-Year Medical Students in Learning Fundamental Library Information Skills. Michigan Health Sciences Libraries Association Annual Conference, Novi, Michigan, October 2012
- **Mi M**, Wu L. Sustaining Librarian Vitality: Embedded Librarianship Model for Health Sciences Librarians. Michigan Health Sciences Libraries Association Annual Conference, Novi, Michigan, October 2012
- Seo M, Eastwood J, **Swanberg S**. Is professionalism applied differently according to the level and context of medical education? 2012 Research in Medical Education Conference, Association of American Medical Colleges, San Francisco, California, November 2012
- **Swanberg S**, Reed-Hendon C, Harriott M, Jurva S. Nurturing Cultural Competency in Future Physicians: An Extracurricular Education Series to Raise Awareness of Local Health Disparities in Medical Students. Medical Library Association Annual Meeting, Boston, MA, May 2013
- **Swanberg S**, Lombardo S, **Bulgarelli N, Mi M**. Sharehousing: Adopting the Household Model in the Establishment and Integration of a New Virtual Medical Library. Michigan Health Sciences Libraries Association Annual Conference, Novi, Michigan, October 2012

CONFERENCE ATTENDANCE, FACULTY DEVELOPMENT, CONTINUING EDUCATION ACTIVITIES

- Keith Engwall and Stephanie Swanberg achieved provisional membership in the Academy of Health Information Professionals (AHIP), the Medical Library Association's national peer-reviewed professional development and career recognition program.
- Nancy Bulgarelli, Keith Engwall, and Stephanie Swanberg attended the eLIS-sponsored eCornucopia conference on May 31, 2013.
- Misa Mi attended the Harvard Macy Program for Educators in Health Professions in Boston, MA from January 14-23, 2013 and completed the second session May 13-17, 2013. She received a partial scholarship to attend from The Association of Academic Health Sciences Libraries.
- Stephanie Swanberg attended "Leveraging Librarians' Skills in Searching and Critical Appraisal for Systematic Reviews" a four-hour continuing education course coordinated by the Metropolitan Detroit Medical Library Group on May 17.

- Keith Engwall, Misa Mi, and Stephanie Swanberg attended the Medical Library Association's Annual Conference in Boston, May 4-8, 2013
- Nancy Bulgarelli attended TEDMED in Washington D.C., April 15-19, 2013. She received a partial scholarship to attend.
- Keith Engwall and Stephanie Swanberg attended Michigan Academy of Science, Arts & Letters Conference in Holland, MI, March 21-22, 2013
- Stephanie Swanberg attended the National Network of Libraries of Medicine Disaster Communication Summit in Chicago, IL, March 7-8, 2013. She received a full scholarship to attend.
- Nancy Bulgarelli attended the AAMC Annual Conference in San Francisco, CA from November 1 – 5, 2012
- Nancy Bulgarelli, Keith Engwall, Misa Mi, and Stephanie Swanberg attended the Michigan Health Sciences Libraries Association's Annual Conference in Novi, MI, from October 17 – 19, 2012

HIGHLIGHTS: ADDITIONAL MEDICAL LIBRARY ACTIVITIES & PROJECTS

- **OUWB Publications List** Nancy Bulgarelli and Evan Sprague produced the inaugural edition of the OUWB Publications List, which features faculty, student and staff publications from January – June 2013. The list included a total of 93 publications, including six from MedEdPortal and four featuring our medical students as authors. It was generated by searching in the author affiliation and address fields in PubMed, Scopus, Web of Science, Google Scholar, Google Books, and MedEdPortal. Faculty were also encouraged to submit any publications that might be missed by this search strategy. New editions of the list will be compiled on a quarterly basis.
- **Space**
 - *Library Space Expansion Planning* – Planning for Medical Library expansion within Kresge Library began this year. The Shaw Group delivered a floor plan and cost estimate for the Medical Library expansion project and approval for complete funding was received July 2013.
 - *Medical Library Office Re-heat Project* – The work to supply heat to the Medical Library Office was completed over the 2012 holiday break.
- **Mission, Vision, and Values** Medical Library faculty and staff have been working diligently to revise our mission, vision, and values to align with both the School of Medicine and University Libraries and will debut later this year.
- **Medical Library Safety Plan** In conjunction with Kresge Library, the Medical Library developed a disaster/safety plan. Laminated safety and evacuation information sheets were developed and have been posted in the Medical Library Study Room and individual study rooms.